

Using the MESH (aka Examples how to move stuff over the mesh)

Written by Jim Kinter, K5KTF - Last Updated Thursday, 12 January 2012 07:54

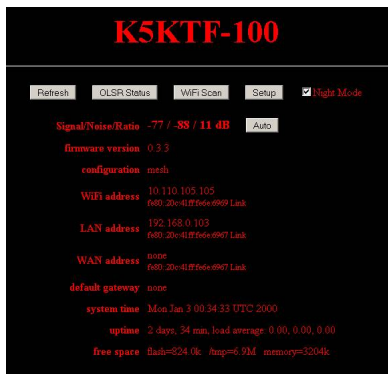
(this is only a photoshop job... NOT a real book... YET)

Many who now have nodes setup and linked are wondering "NOW WHAT???"

Here is an example of setting up something to talk across your mesh.

First, you need to have at least 2 nodes talking to each other.

You can verify this by looking at the main localnode status page (and yes, I prefer "night mode" on my status pages... cant wait till Dave puts that option in OLSR 🙄)



If you have SIGNAL/NOISE/RATIO values, then you have at least 2 nodes talking. If it says N/A, then the nodes cant see each other yet. Try repositioning the node, adding a reflector or two (<http://www.freeantennas.com/projects/template2/index.html>), or maybe you might need another node in between to help bounce. Thats EXACTLY what we had to do, was I moved K5KTF-101 closer (out in the workshop) to FZU's QTH, AND made one reflector from that link and slipped it on one of the -101 antennas, pointing towards his house.

Using the MESH (aka Examples how to move stuff over the mesh)

Written by Jim Kinter, K5KTF - Last Updated Thursday, 12 January 2012 07:54

Once that is verified, now you need to have stuff talk over the mesh.

So lets say you have 4 nodes. We will use mine and my neighbor's, KA5FZU, as an example. We actually JUST got this working between his QTH and mine last night (8-19-2010).

So the setup is like this:

If you study the diagram above, you will notice TWO different sets of IP addresses.

The ones in blue are the WLAN IP's, or the IPs for the wireless connections.

The IP's in green are whats behind the node, either statically set or DHCP (handed out by the node).

Straight lines in green are cat5 cable connecting devices.

The red lines are the different wireless connections made between nodes.

So, for FZU to be able to see a web page on my web server, I had to map Port 80 (the standard web page port) on K5KTF-100 to point to the web server's LAN IP address. That looks like this:

Using the MESH (aka Examples how to move stuff over the mesh)

Written by Jim Kinter, K5KTF - Last Updated Thursday, 12 January 2012 07:54

Of course, I have to have my web server listening on port 80 and on the LAN, but that is a totally different subject. Email me privately for help with Apache.

Once the port is mapped, then FZU would get onto either of his laptops (since they both can see K5KTF-100 through K5KTF-101 and his nodes), and he would enter in the IP address of K5KTF-100 (<http://10.110.105.105/>) and NOT the 192.168 IP address, or any of the nodes in between.

Your "target IP" will ALWAYS be the **WLAN IP of the node** that the target is connected to.

As you can see from the above port-mapping picture, I also mapped ports 110, 25, and 587 to my email server. Those are the 3 common ports used for email. If FZU was to add a new account to his email client (Eudora, Outlook, Thunderbird, etc), if he used K5KTF-100's WLAN IP (10.110.105.105) as the POP and SMTP servers for that account, he could send and receive email through my mail server across the mesh. Once on my mail server, it would go out the public network (internet) to wherever it needed to go. But that keeps the mesh OFF the public internet, but still allows mail to flow from inside to out.

THEN comes the fun part. Being able to transfer files between our 2 computers..... 🐼

On the port mapping page on K5KTF-100, I put MY personal PC's private lan IP in the "DMZ" (demilitarized zone, which means anything trying to hit a port NOT already mapped above, will go to that IP address).

Using the MESH (aka Examples how to move stuff over the mesh)

Written by Jim Kinter, K5KTF - Last Updated Thursday, 12 January 2012 07:54

I also had to add an exception to my Windows firewall, to exclusively *allow* KA5FZU-100 and -101 IP addresses, to allow him to use Windows networking to get into my PC. I already had shared folders setup on my PC, so I didnt have to do anything extra. HE on the other hand, created a special folder called "Mesh Dropped Files" and shared it. Then we added his PC's IP address (the 172.27.0.x IP) to the DMZ on his nodes.

Then, to get TO each other's PC's, you would do a START, RUN, (or WIN key and R) and type in \ and the *TARGET WLAN* IP or the TARGET node name, and click OK.

That pops up a Windows Explorer window showing any shared files/folders/printers on that PC. If I opened a second Explorer window (by holding down the WIN key --to the left of the spacebar between CTRL and ALT on most PC keyboards-- and tapping E), then I could drag and drop files between the two windows, copying files across the mesh.

For my personal setup on my Windows 2000 PC, I had to add a ROUTE to be able to talk to the mesh THROUGH my first node. Usually the default setup would NOT need this, as you would be plugged directly into the node itself, and would get it directly from the node. But just in case....

The syntax for the command is **route**, the **-p** is to make it persistent across reboots, then the network (ALL of the **10.0.0.0** network), the word **m**
ask
and the netmask of the mesh (**255.0.0.0**
) , and the then IP of the gateway to the mesh (on mine its **192.168.0.103**
) which is the LAN IP of the 1st mesh node (by default it usually is 172.27.0.1)

Using the MESH (aka Examples how to move stuff over the mesh)

Written by Jim Kinter, K5KTF - Last Updated Thursday, 12 January 2012 07:54

For DNS to work properly (calling by name instead of IP) under Windoze, you need to do 2 more things:

Add the LAN IP of the node (192.168.0.103 in my example) as your secondary/alternate DNS server (Control Panel, Network Settings, LAN Properties, IP (V4 if needed) Properties, and the 2 DNS servers at the bottom).

Then, while in there, click the ADVANCED button, DNS tab, and check the "Append these DNS suffixes" box and then add "austin.tx.us.mesh" (without quotes) to that section. OK all the way out, and maybe reboot to make sure all settings jive, and it should all work.

I hope this article has helped clear up issues you may have trying to run things over a mesh. If you have any questions, feel free to email me (jim at mycallsign dot com) and I will try my best to assist.

Thanks for reading & 73

Jim K5KTF